

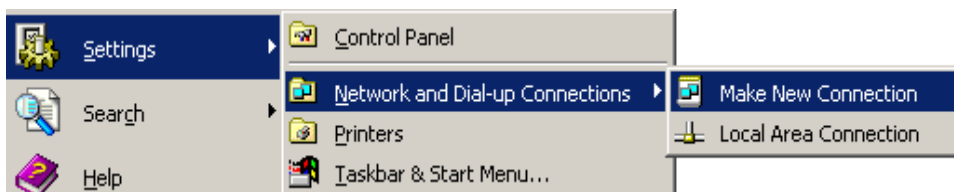
Technical Instructions in this manual are applicable for Windows 2000/XP version of VDRS software.

Some corrections/updates can be made without particular notice, to provide precise instructions.

### 1. Client/Server Communication in Windows 2000/XP

### 2. Configuration Setting in Server System

- A. Click Start Menu and execute [Settings - Network and Dial-up Connections - Make new Connection].



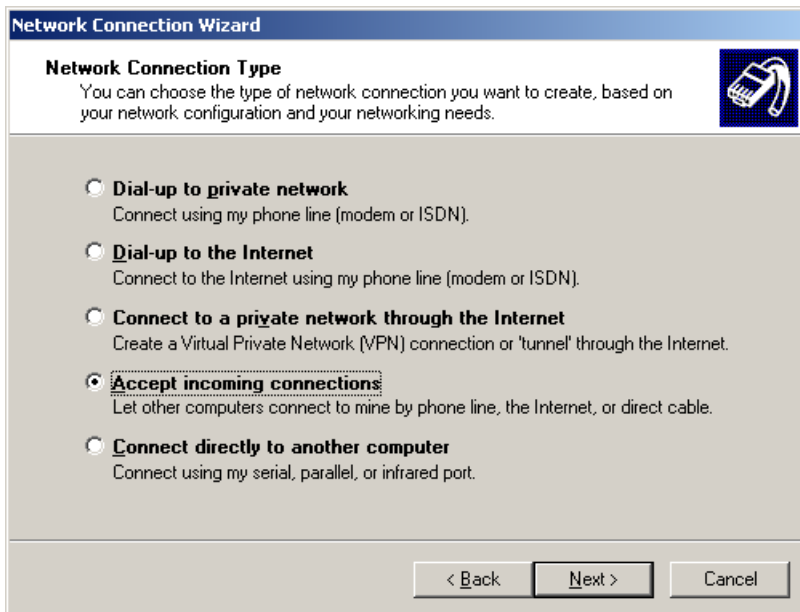
<Image 1> Make New Connection

B. Click 'Next'.



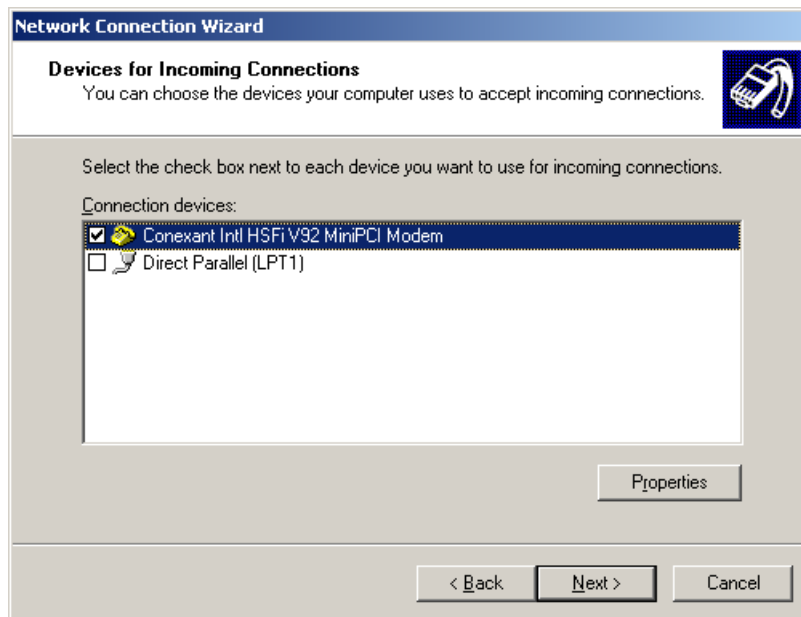
<Image 2> Network Connection Wizard

C. Select 'Accept incoming connections' and click 'Next'. If the modem setting is not completed in advance, a modem setting dialog box will appear. In this case, insert the number, correspond to an area code, and click 'OK'.



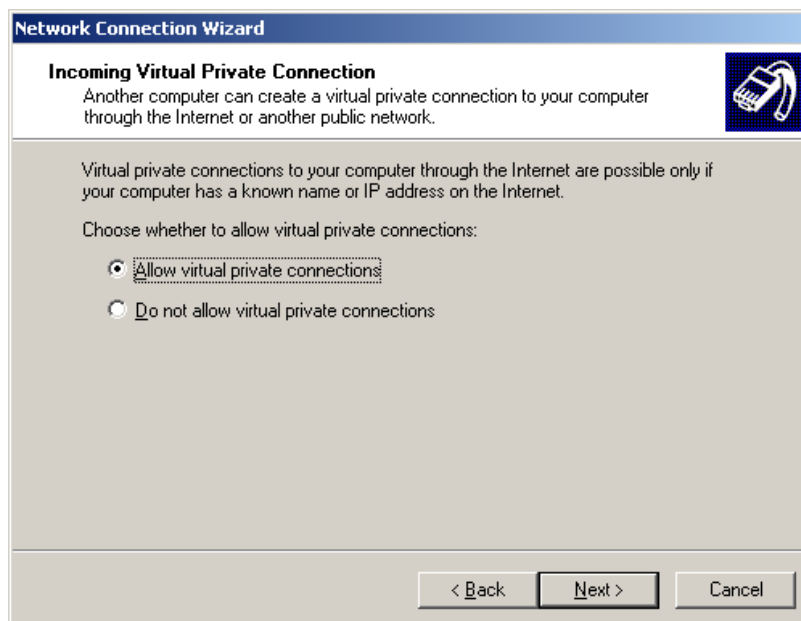
<Image 3> Network Connection Type

D. Choose the installed Modem and click 'Next'.



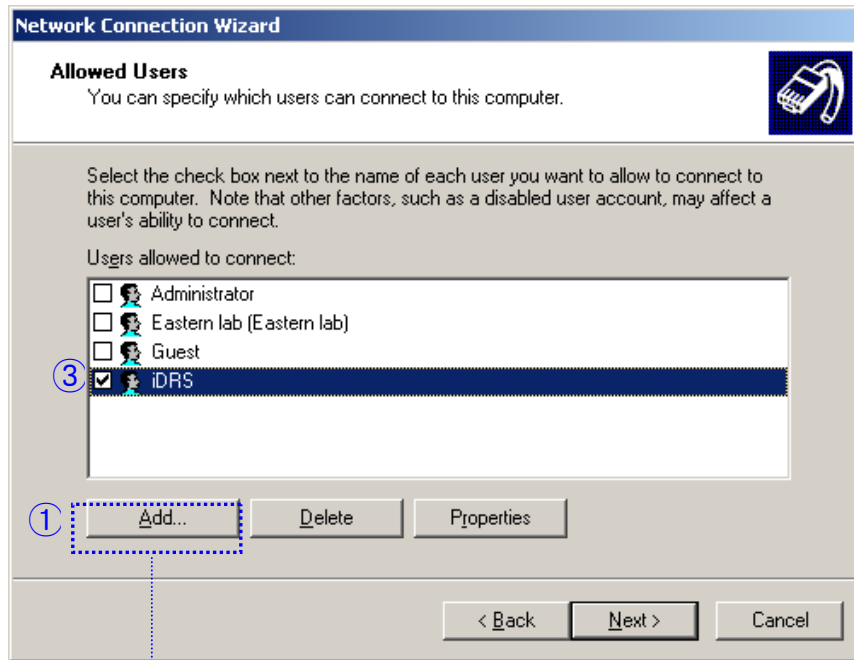
<Image > Devices for Incoming Connection

E. Keep the default value and click 'Next'.

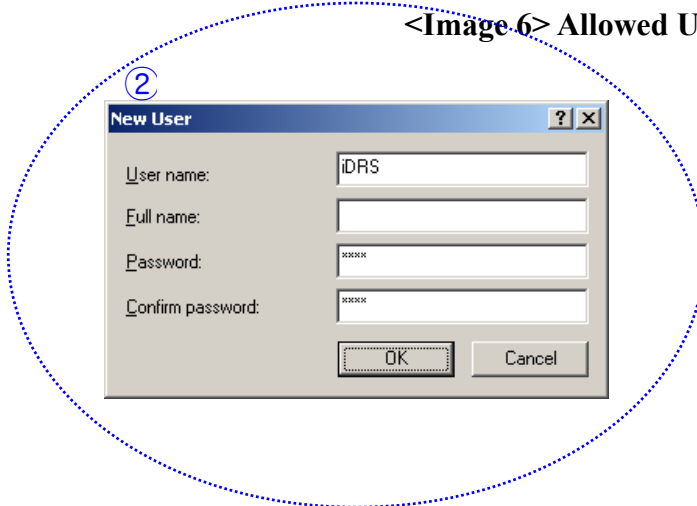


<Image 5> Incoming Virtual Private Connection

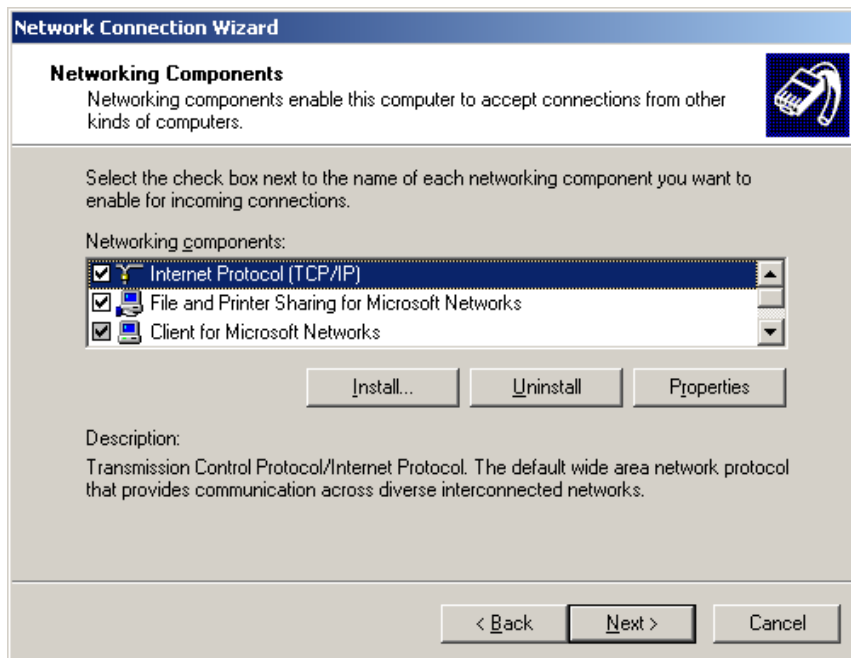
- F. In this step, specify user(s) which can access this VDR-S Server system. Click 'Add' to specify new users and check existing users to set remote access permission. In dial-up connection, assigned ID and password should be used.



<Image.6> Allowed Users

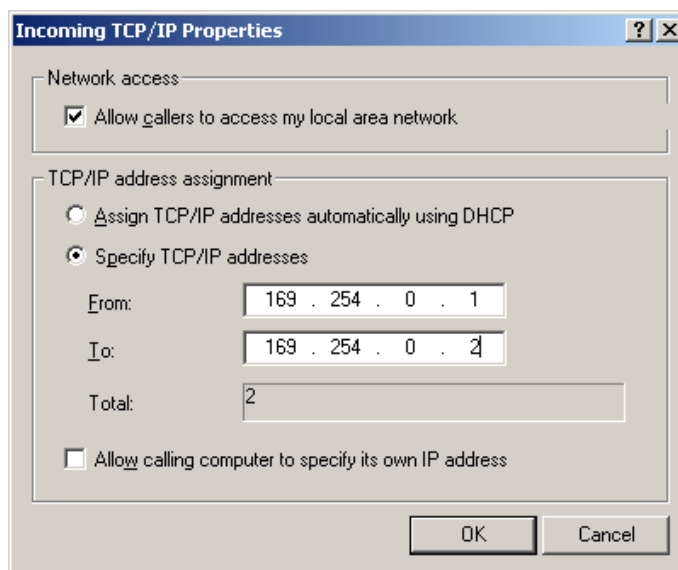


G. Networking Components Setting : Choose TCP/IP and click 'Properties'.



<Image 7> Networking Components

H. When 'Incoming TCP/IP Properties' window appear, set the IP addresses like <Image 8>. IP address can be changed into any values but assigning same address is recommended to access easily with same address.

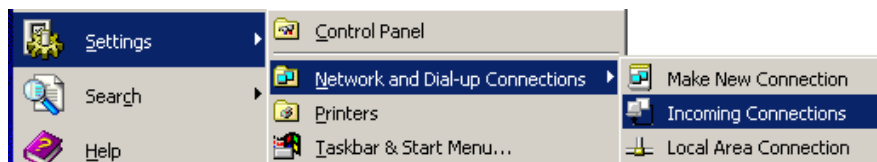


<Image 8> TCP/IP Properties

- I. Network Connection Wizard completed. You can find a new menu item in Start menu, like <Image10>. Now the modem will respond to incoming calls automatically, after iDRS is executed.



**<Image 9> Completing the Network Connection Wizard**

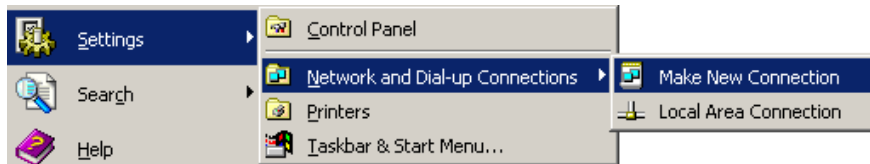


**<Image 10> New menu item in Start Menu**

### 3. Configuration Setting in Client System

t

A. Click Start Menu and execute [Settings - Network and Dial-up Connections - Make new Connection].



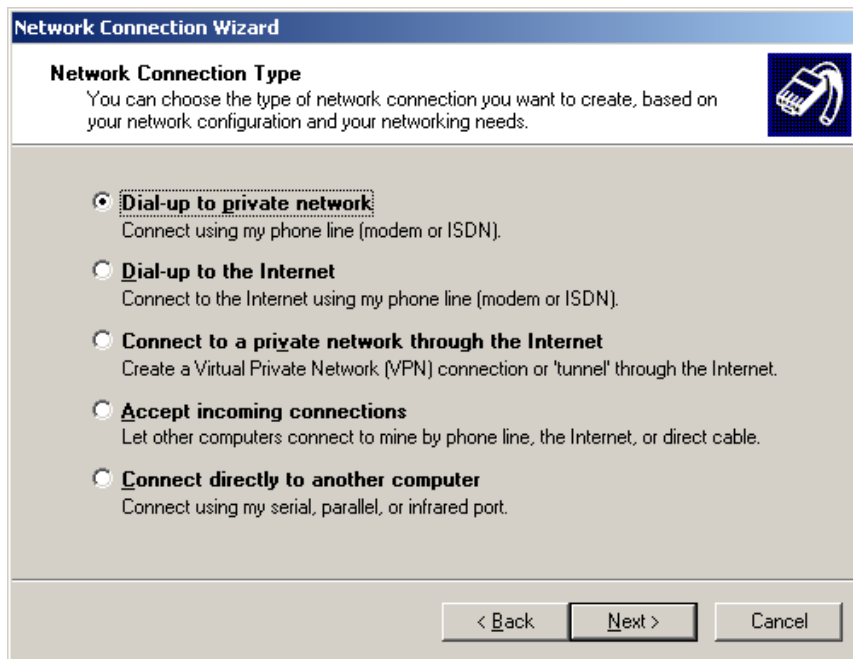
<Image 1> Make New Connection

B. Click 'Next'.



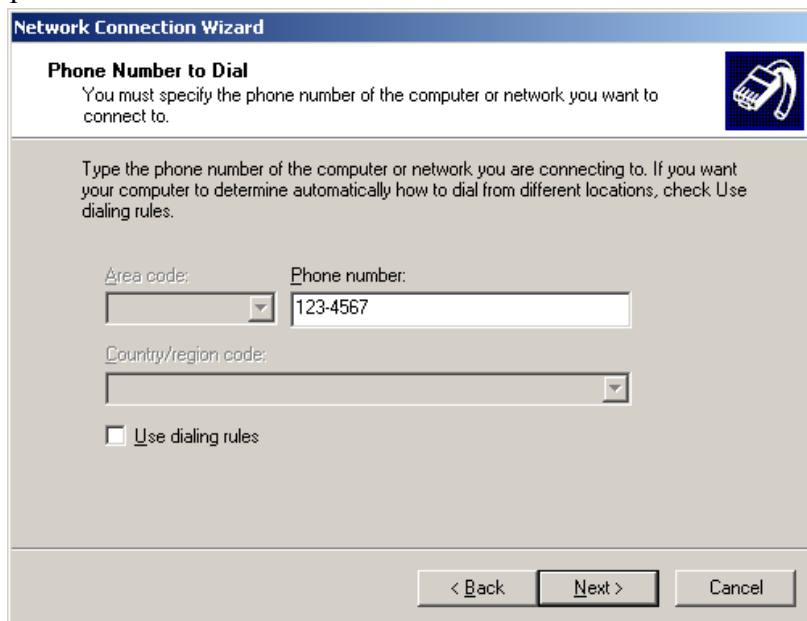
<Image 12> Network Connection Wizard

- C. Choose 'Dial-up to private network' and click 'Next'. If the modem setting is not completed in advance, a modem setting dialog box will appear. In this case, insert the number, correspond to an area code, and click 'OK'.



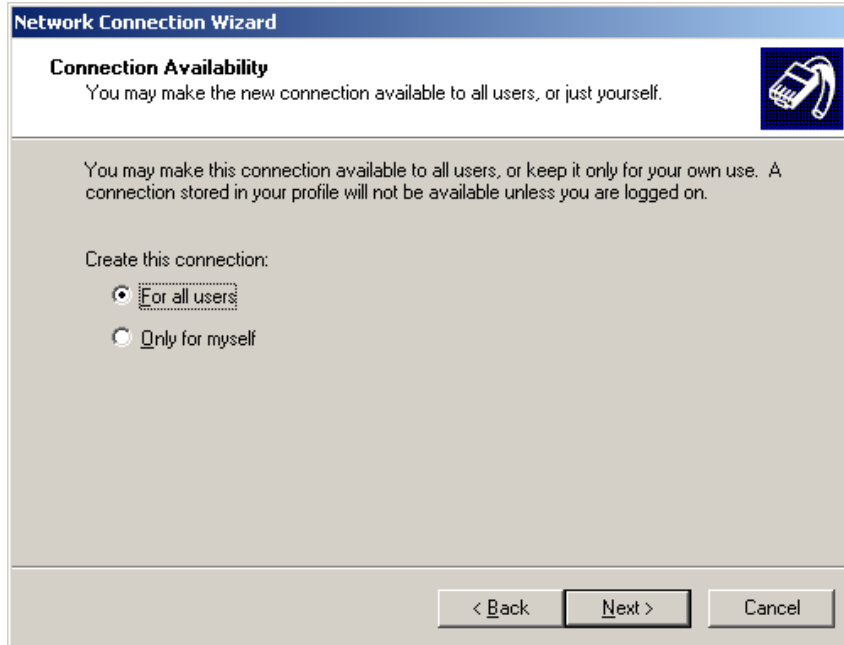
<Image 13> Network Connection Type

- D. Insert phone number of server site and click 'Next'.



<Image 14> Phone Number to Dial

E. Select connection availability, for all users or only for one person. Except some special cases, choose default value(For all user) and click 'Next'.

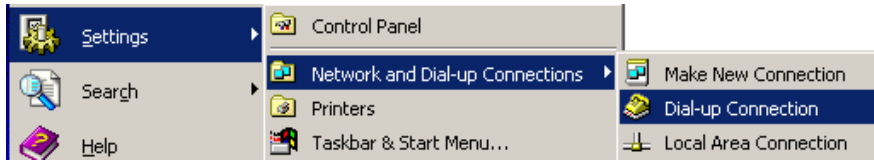


<Image 15> Connection Availability

F. If all above steps are completed, 'Completing the Network Connection Wizard' window will appear. For convenience, check 'Add a shortcut to my desktop' and click 'Finish'. You can find a new menu item in Start Menu and a shortcut icon on desktop.



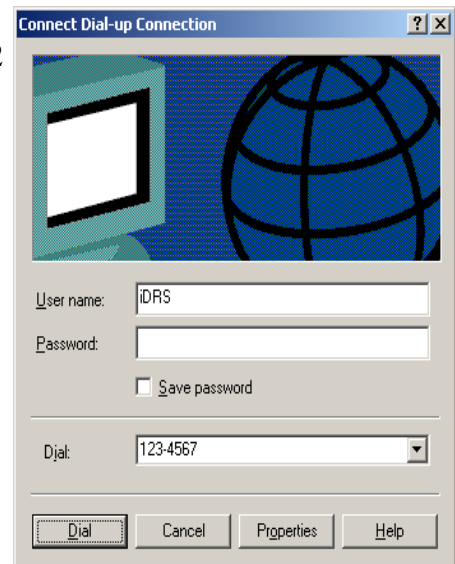
<Image 16> Completing the Network connection Wizard



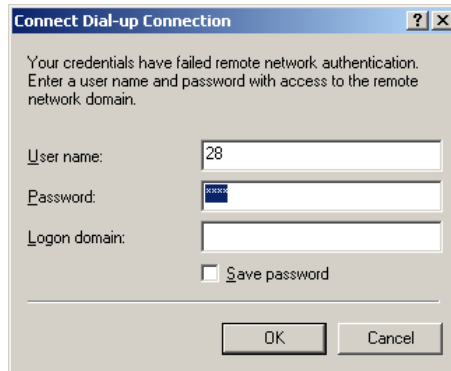
<Image 17> New Menu Item in Start Menu

#### 4. Modem-to-modem remote access from VDR-C Client

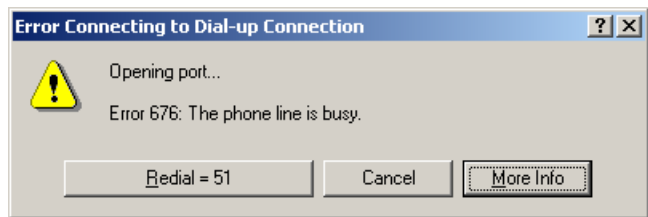
- A. No additional operation or setting is necessary in VDRS Server system, if procedures in step 2 and 3 are completed.
- B. To access to the Server system from Client, click the icon on desktop, which is generated in step 3.
- C. In dial-up connection window, input user name and Password, assigned in above step 2, and click 'Dial'.



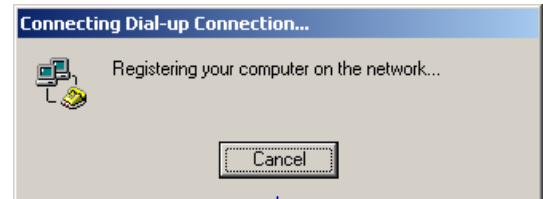
- D. If the User name and/or Password are not correct, the below window will appear to ask correct user name and password.



- E. If connection is not established due to wrong number, following error message will appear.



- F. After dial tone and connection sound, connection success message will appear following the 'Connecting Dial-up Connection' message.



- G. Execute Client software. Input IP address as 169.254.0.1, or some figures which were assigned at 'From' in <Image 8>.



- H. Insert the Port, Login and Password to access. Please refer to the Client Manual after this step.